

Table of Contents

- | Welcome
- | About the property
- | Locally owned, with national reach
- | About the Margaret River Region

Welcome

Thank you for your interest in 18 Wisteria Crescent, Margaret River.

At First National Real Estate Margaret River, we strive to make the process of buying and selling property as simple and as straight-forward as possible.

I'm here to answer any questions you may have, so don't hesitate to get in contact.

I look forward to being of assistance in your search for your new property.

Yours sincerely,

First National Real Estate Margaret River

Megan Booth

m. 0427 480 745

About the property



18 Wisteria Crescent, Margaret River

A MODERN FAMILY HAVEN OPPOSITE A PLAYGROUND

UNDER

OFFER

1 Living Area

Reverse Cycle Air Conditioning

Remote Garage

Secure Parking

Outdoor Entertaining

Built In Robes

Dishwasher

Nestled in the heart of the sought-after Brookfield Estate, where comfort, style, and convenience converge. Perfectly positioned opposite a children's playground and expansive open public space, this home offers the ideal setting for family life.

Constructed with care from double rendered brick and topped with a sleek Colorbond roof, this four-bedroom, two-bathroom gem is as solid as it is stylish. The spacious master suite, located at the front of the home, invites you to unwind with its plush carpets, roller blinds, ceiling fan, and a walk-in robe. The ensuite bathroom is a true retreat, featuring a luxurious double-head shower that adds a touch of spa-like indulgence to your daily routine.

Venture further down the hallway, and you'll discover a vibrant open-plan living area that truly feels like the heart of the home. The modern kitchen is a chef's dream, boasting striking dark stone benchtops, top-of-the-line stainless steel appliances, including a 900mm electric oven, 5-burner gas cooktop, rangehood, dishwasher, and a plumbed fridge recess. With not one but two spacious pantries, storage will never be an issue. The hard-wearing vinyl wood-look flooring adds warmth and durability, while the reverse cycle air conditioning ensures comfort all year round. From here, step out onto the alfresco area, perfect for entertaining or enjoying a quiet

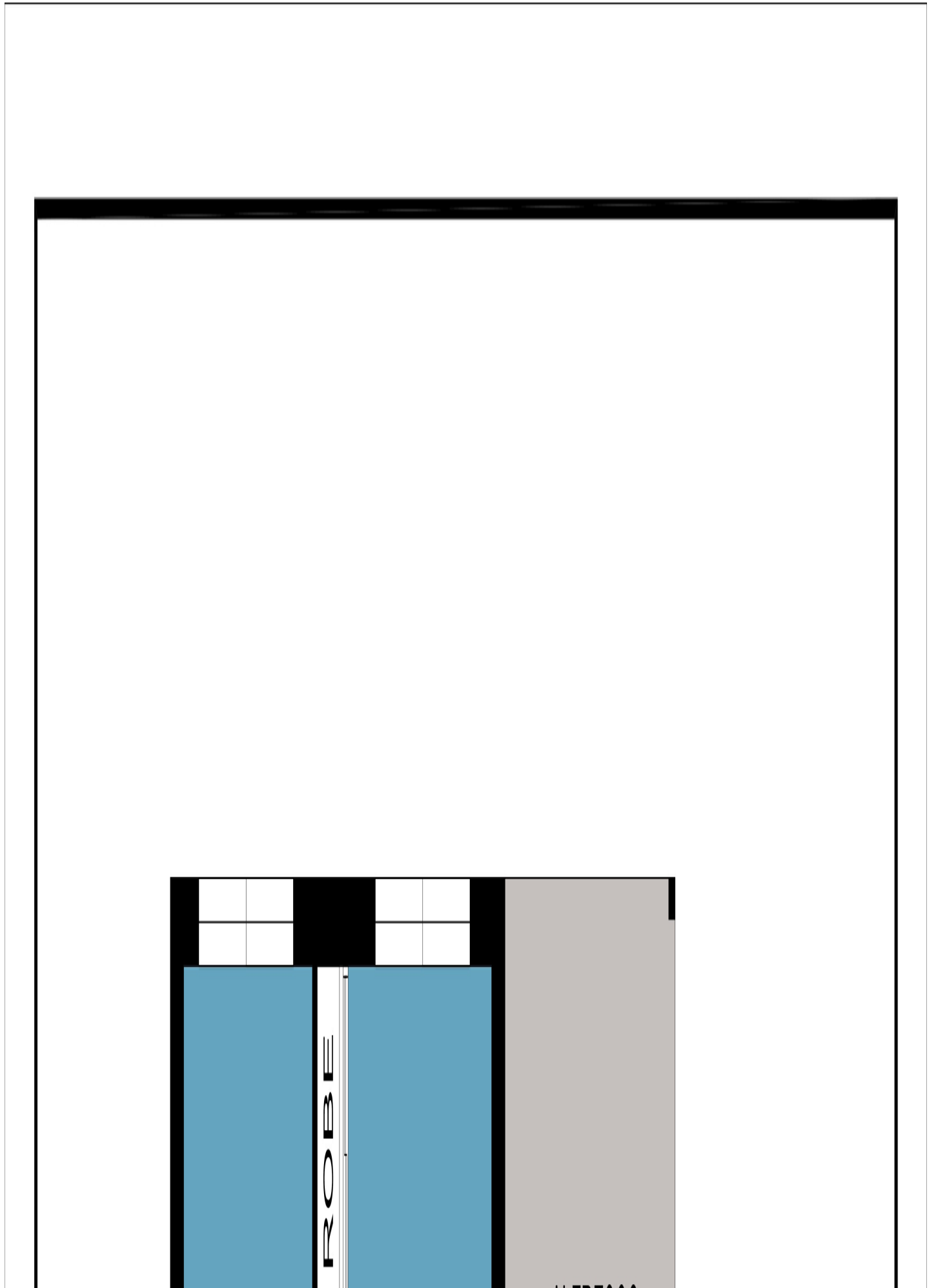
evening in your easy-care backyard.

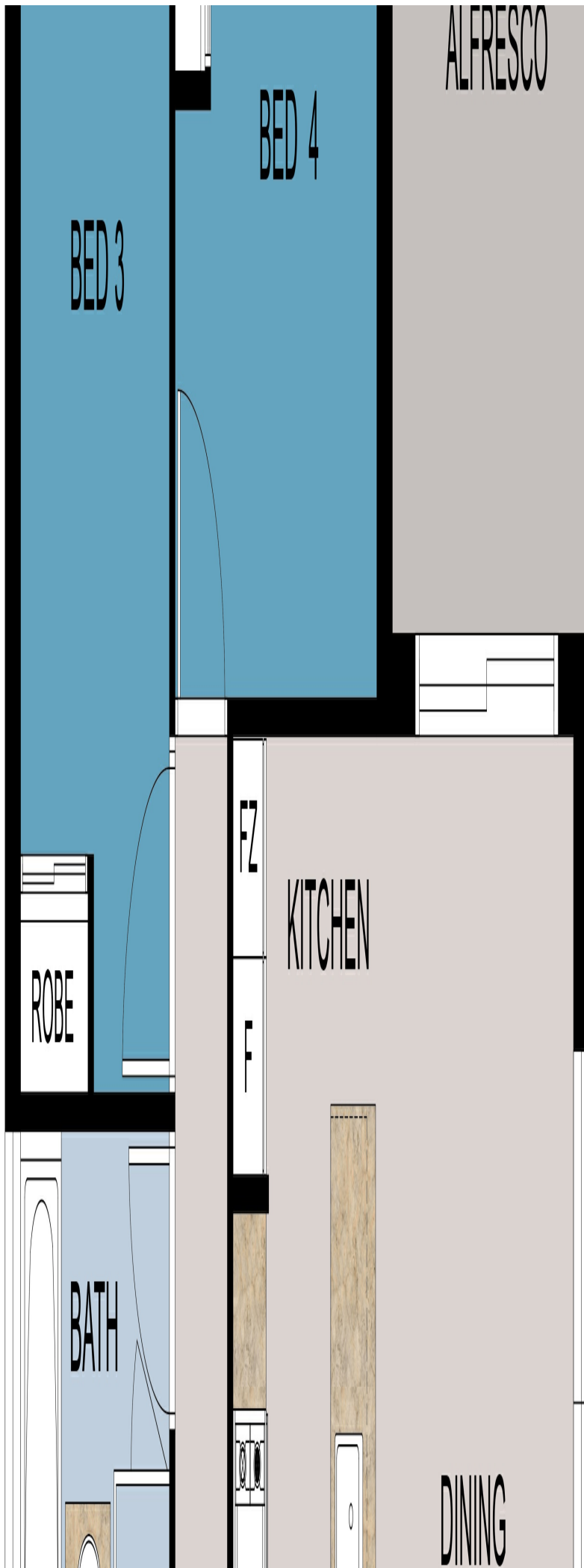
The three minor bedrooms, all generously sized, offer comfort and convenience with built-in robes, ceiling fans, and roller blinds. They share a well-appointed main bathroom, while the nearby laundry, complete with a separate WC, adds to the home's practicality.

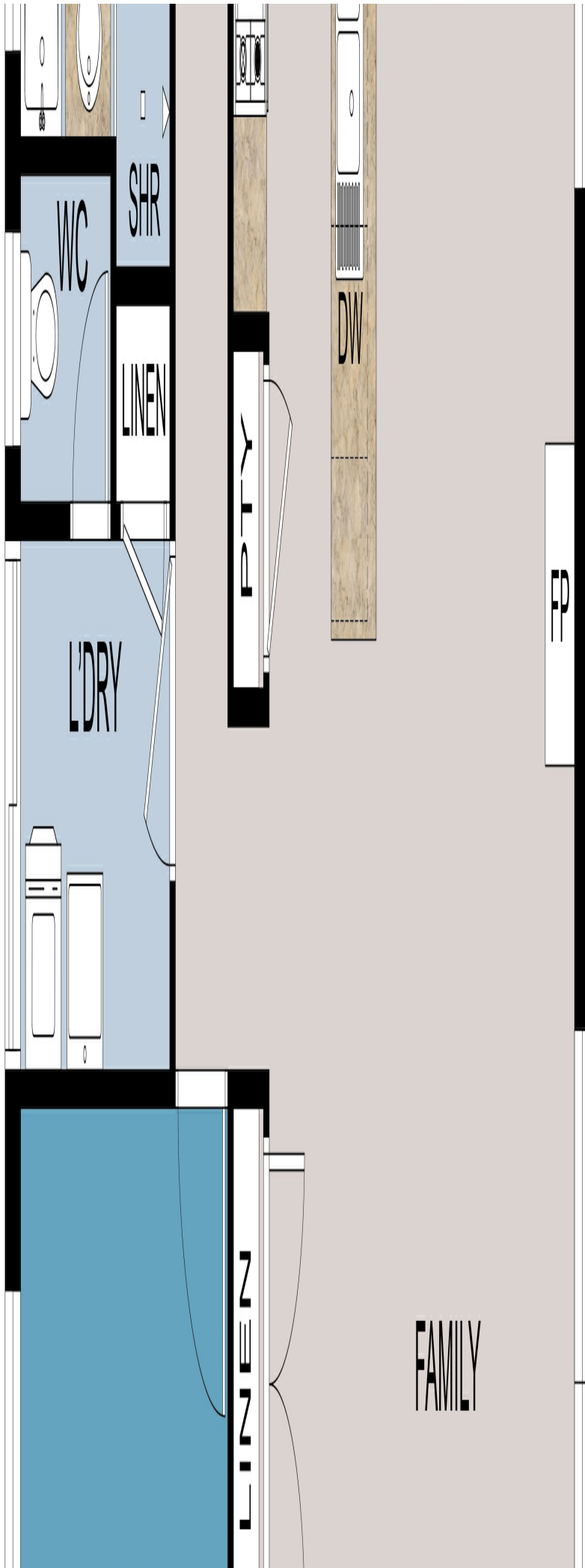
Beyond the interior, this home is packed with thoughtful features. Enjoy the peace of mind provided by sound-deadening insulation in both internal and external walls, an instantaneous gas hot water system, and full fencing for privacy. The double garage, with an extra 1.2 metres in depth, offers ample space for storage and parking, complete with a rear roller door for easy backyard access.

With its fantastic location, solid construction, and modern amenities, 18 Wisteria Crescent is more than just a house—it's the perfect place to call home.

Floor Plan







BED 2

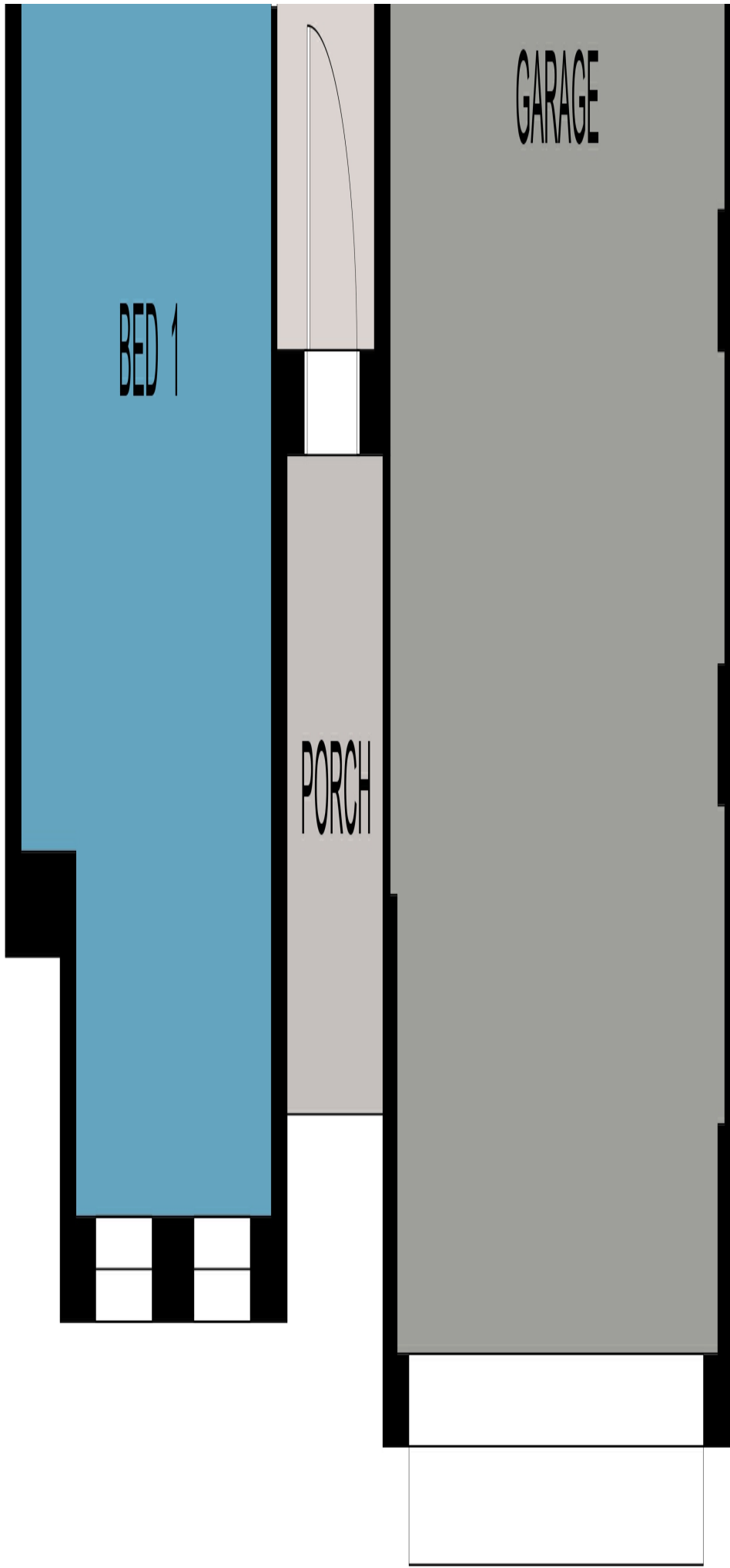
ROBE

ENS

SHR

WR

ENTRY



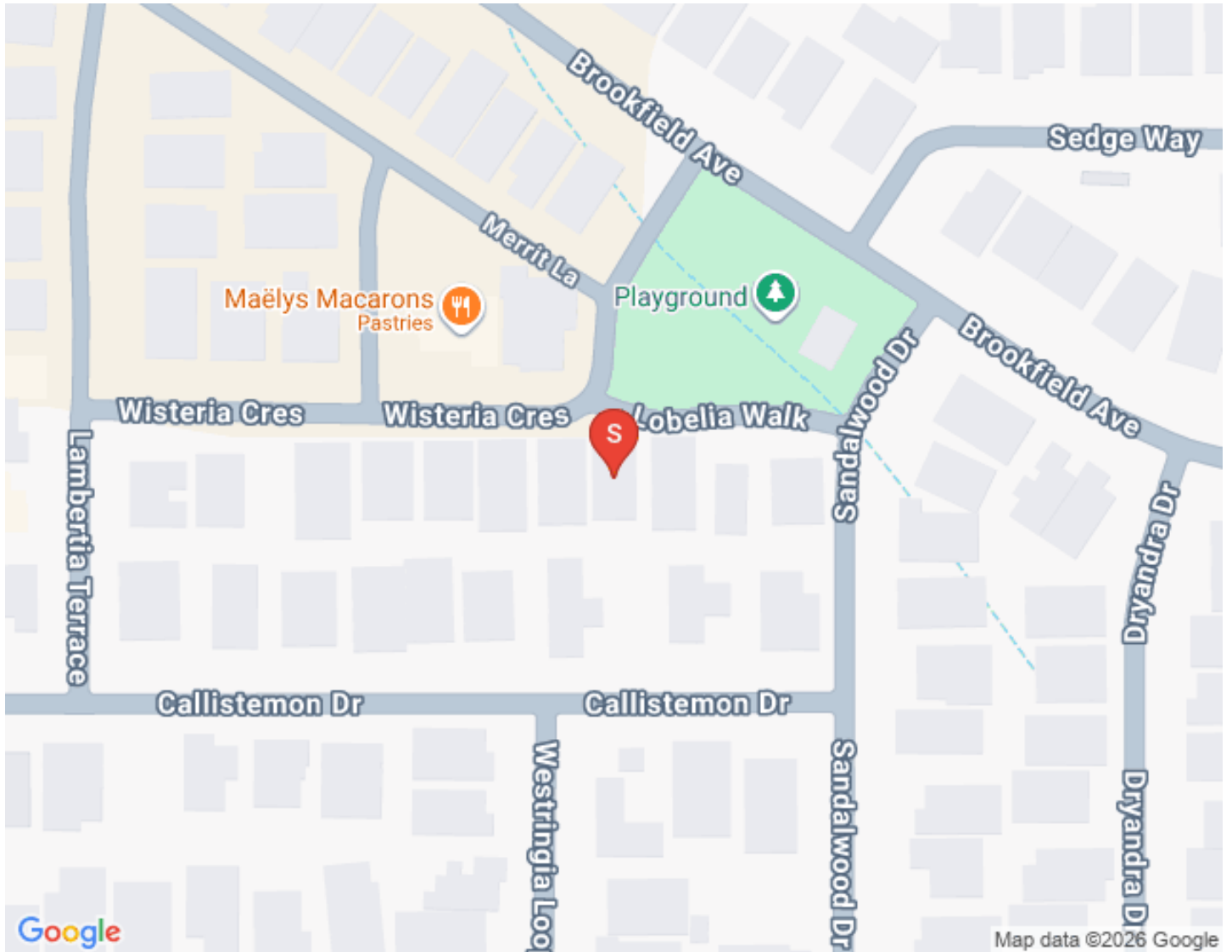
FLOOR PLAN

This floor plan including furniture, fixture measurements and dimensions are approximate and for illustrative purposes only.

BoxBrownie.com gives no guarantee, warranty or representation as to the accuracy and layout.

All enquiries must be directed to the agent, vendor or party representing this floor plan.

18 Wisteria Crescent, Margaret River WA 6285



Title Documents

**Certificate of
Title**

**Deposited
Plan**

**Deposited
Plan**

Document

Locally owned, with national reach

Margaret River Real Estate First National

Our company

Margaret River Real Estate First National is the first choice for the most advanced real estate services. We facilitate the sale, rental and management of land, residential, lifestyle, rural, industrial and commercial property in the heart of the south west Capes of Western Australia.

If you've been waiting for the ideal time to buy, sell or lease property...it's now. Let us show you why!

...and whether you choose Margaret River Real Estate First National to **buy, sell, rent or manage** your property, you can be sure we'll offer you carefully tailored solutions, the highest level of professionalism, expert local knowledge and the most experienced, highly regarded real estate agents and property managers in Margaret River.

Our aim is to get you better results, faster.

Your agent



Megan Booth

m. 0427 480 745

megan@margaretriverrealestate.com.au

www.margaretriverrealestate.com.au

we put you first.

Margaret River WA 6285

Suburb Snapshots

Houses



Median House Price
\$996,000

12 months from 28-Apr-2025



Median Days on Market (House Sales)
46

12 months from 28-Apr-2025



Number of Houses Sold
119

12 months from 28-Apr-2025



Houses for Sale
39



Interested Buyers (House)
2332



Houses for Rent
16

Units



Median House Price

\$996,000

12 months from 28-Apr-2025



Median Days on Market (House Sales)

46

12 months from 28-Apr-2025



Number of Houses Sold

119

12 months from 28-Apr-2025



Houses for Sale

39



Interested Buyers (House)

2332



Houses for Rent

16

Powered by PropTrack



This information is supplied by First National Group of Independent Real Estate Agents Limited (ABN 63 005 942 192) on behalf of Proptack Pty Ltd (ABN 43 127 386 298).

For state-specific copyright and data disclaimers, see [Copyright and Legal Disclaimers about Property Data](#).

About the Margaret River Region

Explore our region



Margaret River is one of Western Australia's best tourist draw cards as it is world renowned for its winemaking, spectacular surf breaks and coastal scenery. Towering forests and picturesque vineyards provide scenic delight above ground whilst magnificent limestone caves form unique beauty underground. Located just 300 kilometres south of Perth, Margaret River is a holiday destination that is accessible to all and each year, some 1,500,000 overnight visitors embrace the diversity of this surfing, scenic wine growing region. The Augusta Margaret River region is enriched with wide range of cultures, characters and activities and supports a local population of approximately 15,000, making it one of the fastest growing shires in Australia.

[Cowaramup](#)

[Gnarabup](#)

[Gracetown](#)

[Hamelin Bay](#)

[Karridale](#)

[Margaret River](#)

[Prevelly](#)

[Rosa Brook](#)

[Witchcliffe](#)